



For patients with Relapsing Forms of Multiple Sclerosis

Glatiramer Acetate Injection

20 mg/mL and 40 mg/mL

WORKS FROM HOME

This self-injection guide does not take the place of talking with your doctor about your medical condition or treatment.

USE

GLATIRAMER ACETATE INJECTION is a prescription medicine used for the treatment of people with relapsing forms of multiple sclerosis (MS), to include clinically isolated syndrome, relapsing-remitting disease, and active secondary progressive disease, in adults.

IMPORTANT SAFETY INFORMATION

Do not take GLATIRAMER ACETATE INJECTION if you are allergic to glatiramer acetate or mannitol.

Serious side effects may happen right after or within minutes after you inject glatiramer acetate injection at any time during your course of treatment.

Please see additional Important Safety Information on the last page. [Click here for the Full Prescribing Information, Patient Information Leaflet and Instructions for Use for GLATIRAMER ACETATE INJECTION 20 mg/mL](#) or [GLATIRAMER ACETATE INJECTION 40 mg/mL](#). [Click here](#) for the Instructions for Use provided with your *WhisperJECT*® Autoinjector device.



VIATRIS™

Features of the *Whisper*JECT

The *Whisper*JECT Autoinjector is intended for use with FDA-approved drug products with non-viscous (aqueous) liquid formulations, which are presented in a 1.0 mL BD®, pre-filled, glass syringe with staked needle, containing a fixed needle of 27G to 29G. The *Whisper*JECT Autoinjector is a reusable injection device for the subcutaneous injection of certain FDA-approved drugs.

The *Whisper*JECT Autoinjector device has features that have been designed by patients, for patients.



[Click here](#) for the Instructions for Use provided with your *Whisper*JECT Autoinjector device. The *Whisper*JECT Autoinjector is available by Rx only.



Here when you need us!

(1.844.695.2667)



VIATRIS ADVOCATE® is your patient support program to help you with your VIATRIS Glatiramer Acetate Injection therapy.

MS-experienced nurses work with you one-on-one to:

- Go through the injection process step by step to help you learn proper injection techniques
- Help you adjust your routine based on lifestyle changes such as changes in weight
- Provide you with tips regarding preparation, administration, storage and disposal of your medicine
- Offer you tools for tracking self-injections
- Connect you to supportive resources and encourage you to participate in the MS community
- Assist you in connecting to a support network

IMPORTANT SAFETY INFORMATION

The most common side effects in studies of GLATIRAMER ACETATE INJECTION are redness, pain, swelling, itching, or a lump at the site of injection, rash, shortness of breath, and flushing. These are not all the possible side effects of GLATIRAMER ACETATE INJECTION.

Please see additional Important Safety Information on the last page. Click here for the Full Prescribing Information, Patient Information Leaflet and Instructions for Use for GLATIRAMER ACETATE INJECTION 20 mg/mL or GLATIRAMER ACETATE INJECTION 40 mg/mL.

Click here for the Instructions for Use provided with your *WhisperJECT* Autoinjector device.

Welcome Pack



Hot Cold Gel
Pack Front



Neoprene
Sleeves Front



Brochure



Needle Clippers



Artist Bio Card

Included inside the **VIATRIS ADVOCATE Welcome Pack** you'll find:

- Neoprene sleeve that showcases inspiring art created by Shana Stern, an artist living with a relapsing form of multiple sclerosis
- Brochure about VIATRIS' Glatiramer Acetate Injection and VIATRIS ADVOCATE
- Guide for Self-Injection with the *Whisper*JECT Autoinjector
- Needle clipper
- Hot/cold gel pack
- Full Prescribing Information, including Patient Information Leaflet and Instructions for Use

For more information about your patient support program, refer to VIATRIS' Glatiramer Acetate Injection Patient Brochure **in your VIATRIS ADVOCATE Welcome Pack.**

Guide for Self-injection with *Whisper*JECT Autoinjector Rx Only



Start Learning More at
GlatiramerAcetate.com

Recording the Day and Injection Site

Visit GlatiramerAcetate.com to download your free *Rotation Plan* to record your injections with VIATRIS' Glatiramer Acetate Injection.

Inject Glatiramer Acetate into the fatty layer under your skin (subcutaneously).

Legend: ● FINGER ● 30mm

Location	Day	Depth Setting
Back of Upper Right Arm <small>20mm-30mm</small>		
Back of Upper Left Arm <small>20mm-30mm</small>		
Back of Upper Right Hip <small>20mm-30mm</small>		
Back of Upper Left Hip <small>20mm-30mm</small>		
Front of Right Thigh <small>20mm-30mm (outer thigh area) 20mm-30mm (inner thigh)</small>		
Front of Left Thigh <small>20mm-30mm (outer thigh area) 20mm-30mm (inner thigh)</small>		
Abdomen <small>20mm-30mm (upper abdomen area) 20mm-30mm (lower abdomen)</small>		

Remember: There are multiple injection sites within each of the 7 injection areas.



Keeping a record of your injection sites and a rotations plan helps avoid injections in the same sites more than once per week



You may choose to record the location, day, and depth setting of your injection on your *Rotation Plan* PDF available for download from GlatiramerAcetate.com.



See additional information in the *Injection Help* section of the GlatiramerAcetate.com website

Please see additional Important Safety Information on the last page. Click here for the Full Prescribing Information, Patient Information Leaflet and Instructions for Use for GLATIRAMER ACETATE INJECTION 20 mg/mL or GLATIRAMER ACETATE INJECTION 40 mg/mL.

Click here for the Instructions for Use provided with your *WhisperJECT* Autoinjector device.

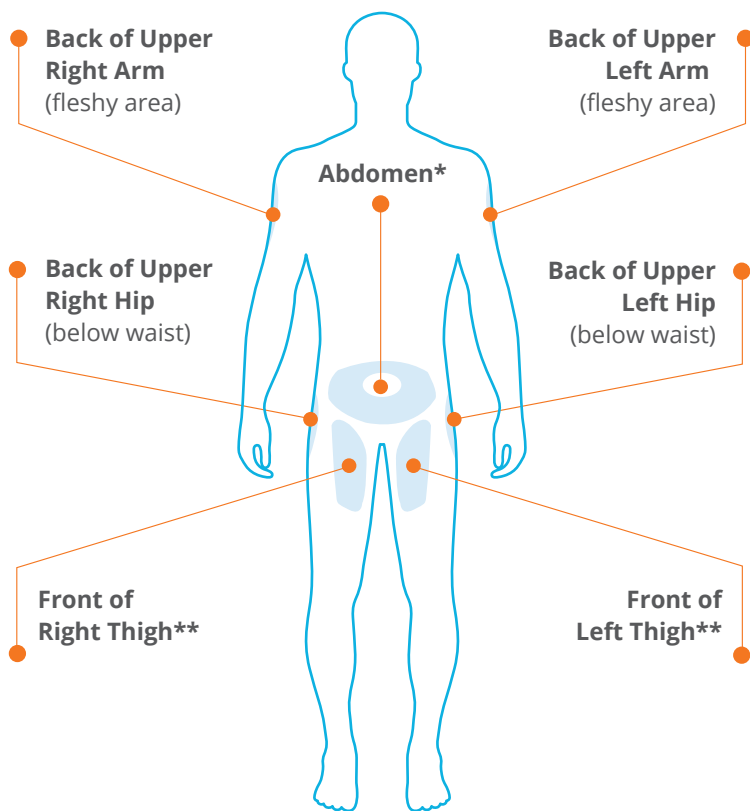
7 Possible Injection Areas

There are 7 possible injection areas. Select a different area each time you inject.

Each injection area contains multiple sites for you to choose from.

Avoid injecting in the same site more than 1 time each week.

Glatiramer Acetate Injection is for under the skin (subcutaneous) injection only; do not inject into your veins (intravenously).



*Stomach area; Avoid 2 inches around the belly button.

**2 inches above knee and 2 inches below groin

Please see additional Important Safety Information on the last page.

Click here for the Full Prescribing Information, Patient Information Leaflet and Instructions for Use for GLATIRAMER ACETATE INJECTION 20 mg/mL or GLATIRAMER ACETATE INJECTION 40 mg/mL.

Click here for the Instructions for Use provided with your *WhisperJECT* Autoinjector device.

IMPORTANT SAFETY INFORMATION

Do not take GLATIRAMER ACETATE INJECTION if you are allergic to glatiramer acetate or mannitol.

Serious side effects may happen right after or within minutes after you inject glatiramer acetate injection at any time during your course of treatment. Call your doctor right away if you have any of these immediate post-injection reaction symptoms including: redness to your cheeks or other parts of the body (flushing); chest pain; fast heart beat; anxiety; breathing problems or tightness in your throat; or swelling, rash, hives, or itching. If you have symptoms of an immediate post-injection reaction, do not give yourself more injections until a doctor tells you to.

Chest pain may occur either as part of the immediate post-injection reaction or on its own. This pain usually only lasts a few minutes or can begin around 1 month after you start using glatiramer acetate injection. Call your doctor right away if you experience chest pain.

A permanent indentation under the skin (lipoatrophy and, rarely, death of your skin tissue also referred to as necrosis) at the injection site may occur due to local destruction of fat tissue. In order to reduce your chance of developing these problems, be sure to follow your doctor's instruction on how to use glatiramer acetate injection and be sure to choose a different injection site each time you use glatiramer acetate injection.

Liver problems, including liver failure, can occur with GLATIRAMER ACETATE INJECTION. Call your healthcare provider right away if you have symptoms, such as nausea, loss of appetite, tiredness, dark colored urine and pale stools, yellowing of your skin or the white part of your eye, bleeding more easily than normal, confusion, or sleepiness.

The most common side effects in studies of GLATIRAMER ACETATE INJECTION are redness, pain, swelling, itching, or a lump at the site of injection, rash, shortness of breath, and flushing. These are not all the possible side effects of GLATIRAMER ACETATE INJECTION. For a complete list, ask your doctor or pharmacist. Tell your doctor about any side effects that you have while taking GLATIRAMER ACETATE INJECTION.

You are encouraged to report negative side effects of prescription drugs to the FDA.

Visit www.fda.gov/medwatch or call 1-800-FDA-1088.

Click here for the full Prescribing Information, Patient Information Leaflet and Instructions for Use for GLATIRAMER ACETATE INJECTION 20 mg/mL or GLATIRAMER ACETATE INJECTION 40 mg/mL.

WhisperJECT and the Glatiramer Acetate Injection Logo are registered trademarks of Mylan Pharmaceuticals Inc., a Viatris Company.

VIATRIS ADVOCATE and the Viatris Advocate Logo are registered trademarks of Mylan Inc., a Viatris Company. VIATRIS and the Viatris Logo are trademarks of Mylan Inc., a Viatris Company. BD is a registered trademark of Becton, Dickinson and Company.

© 2021 Viatris Inc. All Rights Reserved. GA-2021-0098